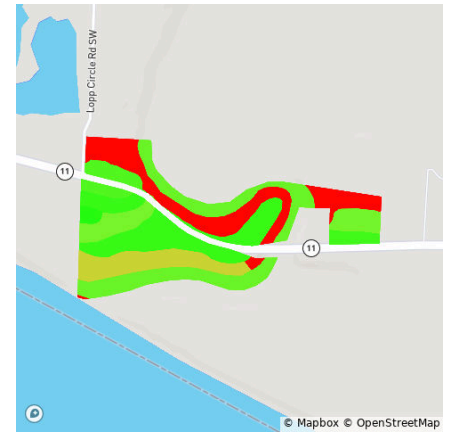
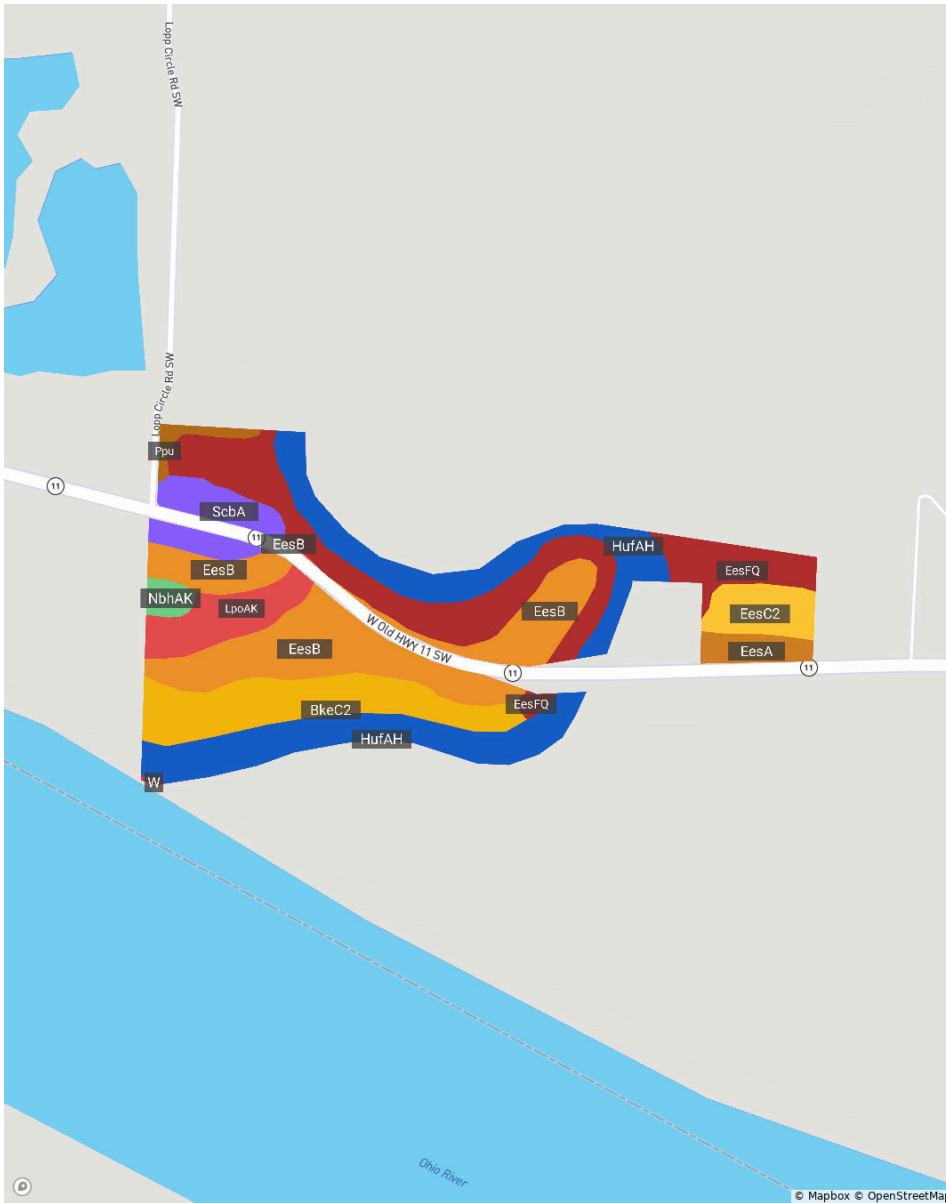
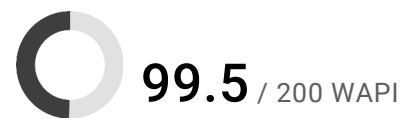
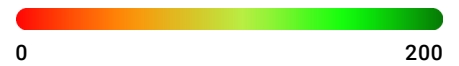


Harrison, IN • Township: Heth • Location: 3-6S-3E

36.7 acres, 2 selections



Quality Gradient • WAPI



Code	Soil Description	Acres	% of Field	Non-IRR Class	WAPI
● HufAH	Huntington silt loam, 0 to 2 percent slopes, frequently flooded, brief duration	11.5	23.4%	2w	129
● EesB	Elkinsville-Millstone complex, 2 to 6 percent slopes	11.5	23.4%	2e	142
● EesFQ	Elkinsville-Millstone complex, 18 to 40 percent slopes, rarely flooded	10.4	21.2%	7e	0
● BkeC2	Bloomfield-Alvin complex, 6 to 15 percent slopes, eroded	5.9	12.1%	3e	92

Harrison, IN • Township: Heth • Location: 3-6S-3E

36.7 acres, 2 selections

Code	Soil Description	Acres	% of Field	Non-IRR Class	WAPI
● LpoAK	Lindside silt loam, 0 to 2 percent slopes, occasionally flooded, brief duration	2.8	5.7%	2w	126
● ScbA	Sciotoville silt loam, 0 to 2 percent slopes	2.5	5.1%	2w	136
● EesC2	Elkinsville-Millstone complex, 6 to 12 percent slopes, eroded	2.1	4.3%	3e	126
● EesA	Elkinsville-Millstone complex, 0 to 2 percent slopes	1.2	2.4%	—	140
● NbhAK	Newark silt loam, 0 to 2 percent slopes, occasionally flooded	0.6	1.2%	2w	149
● Ppu	Pits, sand and gravel	0.5	1.1%	—	0
● W	Water	0.0	0.1%	—	0
Weighted Average					99.5